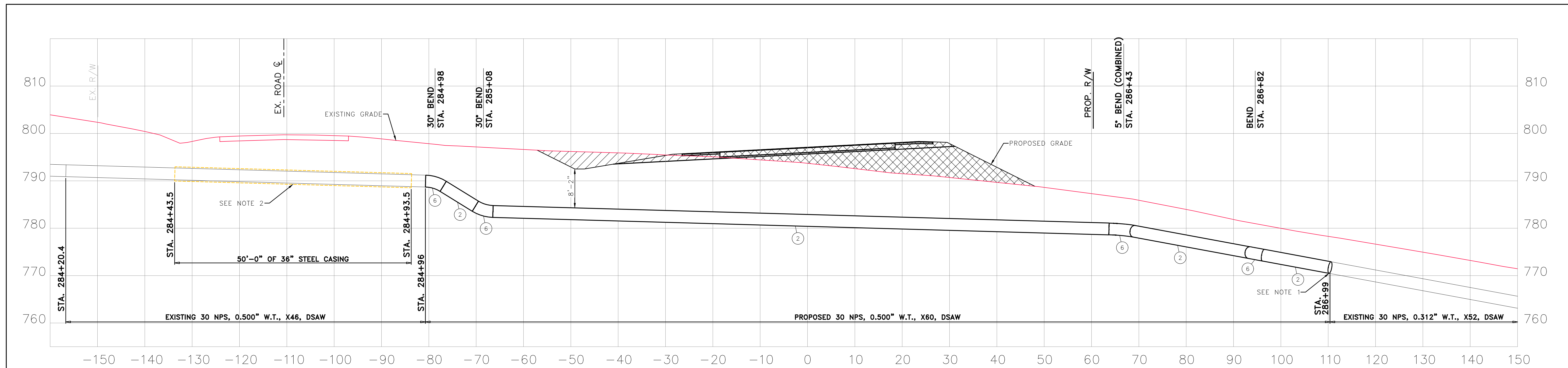


NOTES:
 1. INTERNAL TAPER SHALL BE PERFORMED IN ACCORDANCE WITH KINDER MORGAN O&M 402/C1062 - GENERAL WELDING SPECIFICATIONS PARAGRAPH 3.10.1.4.

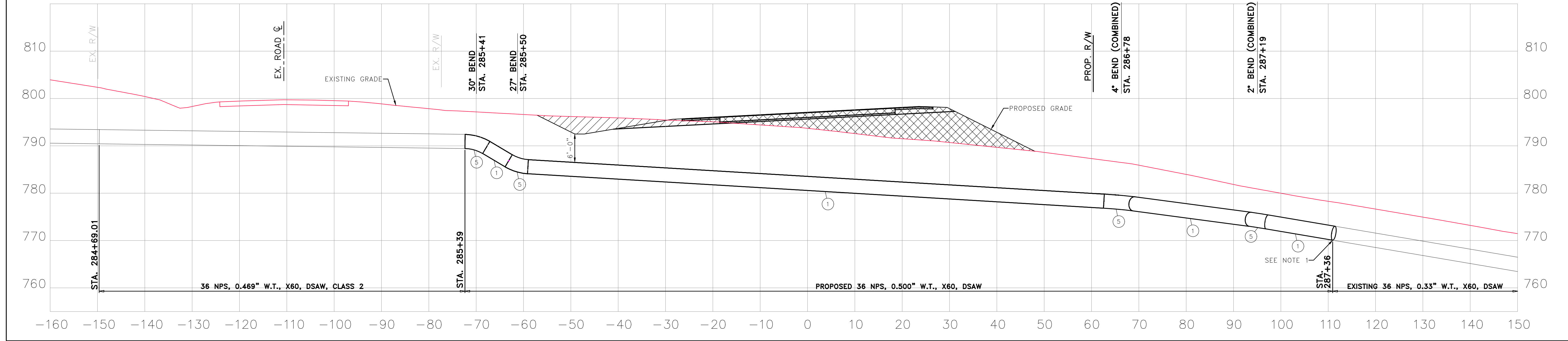
PLAN (TGP LINE 100-4, 100-5, 100-7)
 SCALE 1" = 20'-0"

				:Reference Drawings				:Facility Name			
				PROJECT AFE# 239998		KINDER MORGAN		TENNESSEE GAS PIPELINE COMPANY TGP CASING EXTENSIONS & RELOCATIONS		Status: ISSUED FOR BID	
				TGP CASING EXTENSIONS & RELOCATIONS TGP LINE 100-3, 100-4, 100-5, & 100-7 AT KY SR 32				TGP LINE 100-4, 100-5, & 100-7 AT KY SR 32		STATE: _____ PIN No: _____ CO./PAR: _____ SCALE: 1" = 100'	
C	ISSUE FOR BID	239998	07/07/2025					Category: _____		File Name: _____	
B	ISSUE FOR REVIEW	239998	07/02/2025					Drawing No: _____		Rev C	
A	ISSUE FOR REVIEW	239998	06/26/2025							TO-T6-100-4-229B	
NO	Revision Description	Project ID	Date								

JUN 07, 2025 10:52:26 AM



LINE 100-4 PROFILE
SCALE 1"=10'-0"



LINE 100-7 PROFILE
SCALE 1"=10'-0"

NOTES:

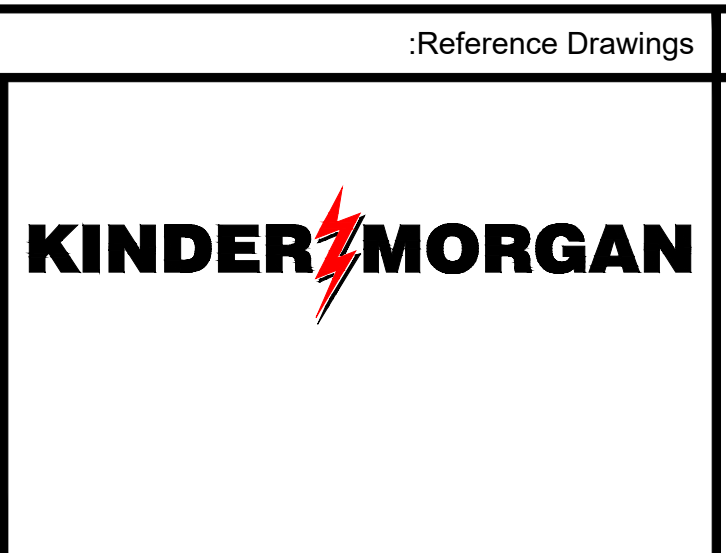
- INTERNAL TAPER SHALL BE PERFORMED IN ACCORDANCE WITH KINDER MORGAN O&M 402/C1062 - GENERAL WELDING SPECIFICATIONS PARAGRAPH 3.10.1.5.
- EXISTING CASING ON LINE 100-4 TO BE REMOVED AND PIPELINE RE-COATED AS PART OF PHASE 2 CONSTRUCTION.

LEGEND:

- CUT
- FILL

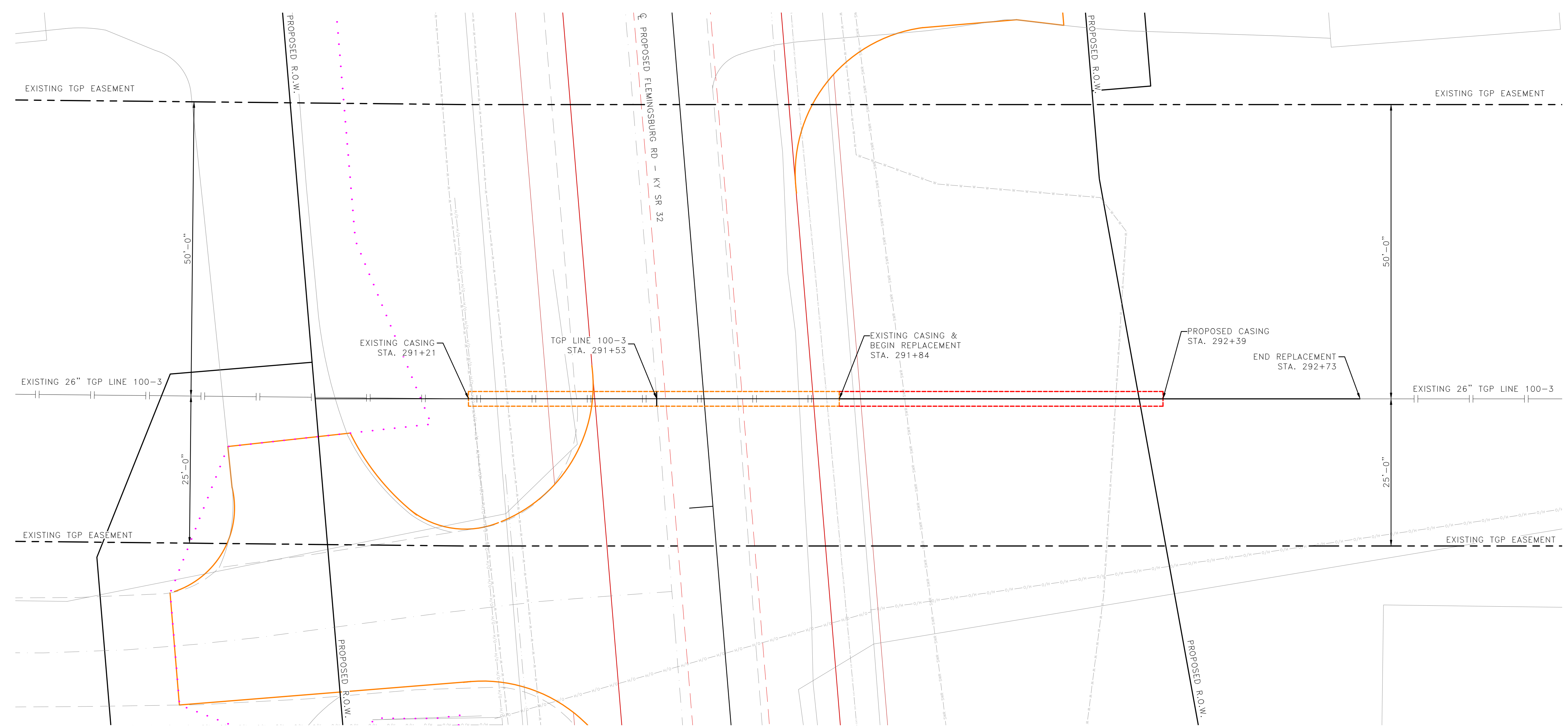
NO.	Revision Description	Project ID	Date
C	ISSUE FOR BID	239998	07/07/2025
B	ISSUE FOR REVIEW	239998	07/02/2025
A	ISSUE FOR REVIEW	239998	06/26/2025

PROJECT
AFE# 239998
TGP CASING EXTENSIONS & RELOCATIONS
TGP LINE 100-3, 100-4, 100-5, & 100-7
AT KY SR 32



TENNESSEE GAS PIPELINE COMPANY
TGP CASING EXTENSIONS & RELOCATIONS
TGP LINE 100-4 & 100-7
AT KY SR 32
PIPING PROFILE

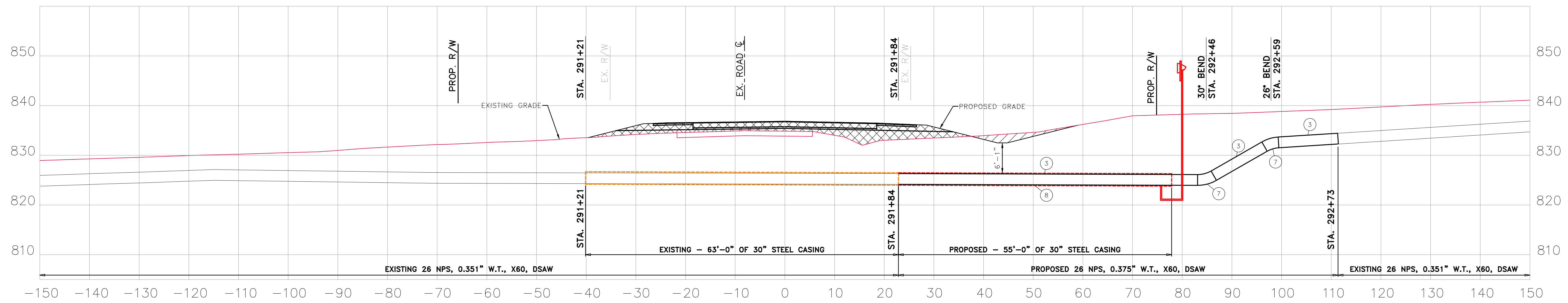
Status:	ISSUED FOR BID
STATE:	PIN No:
CO./PAR.:	SCALE: AS SHOWN
Category:	
File Name:	
Drawing No:	TO-T6-100-4-229B1
Rev	C



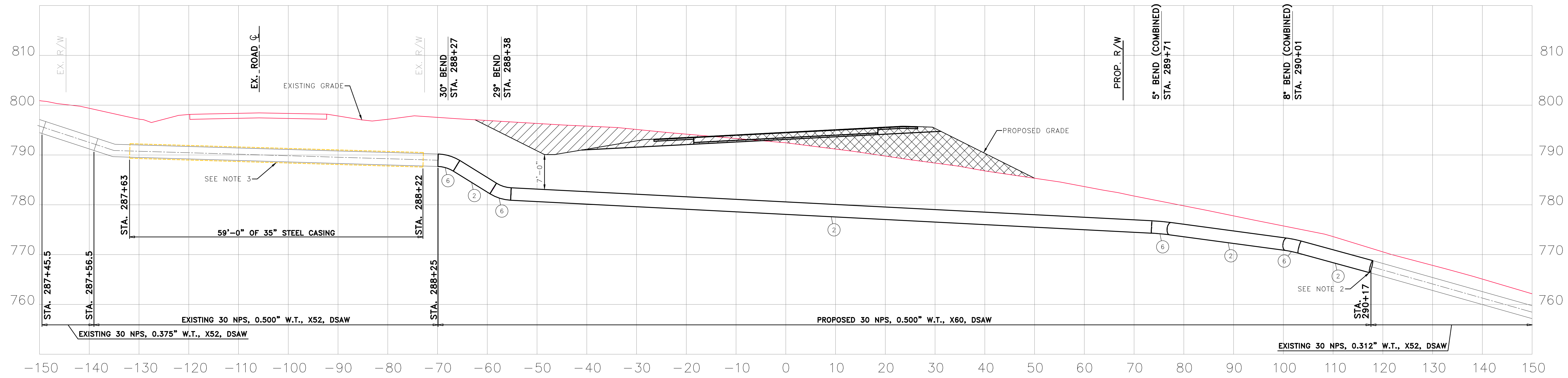
PLAN (TGP LINE 100-3)
SCALE 1" = 10'-0"

- NOTES:
- INSULATORS TO BE SPACED ON 6' CENTERS. END OF CASING TO BE SEALED WITH CASING SEAL.
 - INTERNAL TAPER SHALL BE PERFORMED IN ACCORDANCE WITH KINDER MORGAN O&M 402/C1062 - GENERAL WELDING SPECIFICATIONS PARAGRAPH 3.10.1.4.

				PROJECT AFE# 239998	KINDER MORGAN	TENNESSEE GAS PIPELINE COMPANY TGP CASING EXTENSIONS & RELOCATIONS TGP LINE 100-3 AT KY SR 32	Status: ISSUED FOR BID	:Reference Drawings	:Facility Name
C	ISSUE FOR BID	239998	07/07/2025	TGP CASING EXTENSIONS & RELOCATIONS TGP LINE 100-3, 100-4, 100-5, & 100-7 AT KY SR 32		SITE PLAN	STATE:	PIN No:	
B	ISSUE FOR REVIEW	239998	07/02/2025				CO./PAR.:	SCALE: 1" = 100'	
A	ISSUE FOR REVIEW	239998	06/26/2025				Category:		
NO	Revision Description	Project ID	Date				Drawing No:	TO-T6-100-3-227A	Rev C



LINE 100-3 PROFILE
SCALE 1"=10'-0"



LINE 100-5 PROFILE
SCALE 1"=10'-0"

NOTES:

- INSULATORS TO BE SPACED ON 6' CENTERS. END OF CASING TO BE SEALED WITH CASING SEAL.
- INTERNAL TAPER SHALL BE PERFORMED IN ACCORDANCE WITH KINDER MORGAN O&M 402/C1062 - GENERAL WELDING SPECIFICATIONS PARAGRAPH 3.10.1.5.
- EXISTING CASING ON LINE 100-5 TO BE REMOVED AND PIPELINE RE-COATED AS PART OF PHASE 2 CONSTRUCTION.

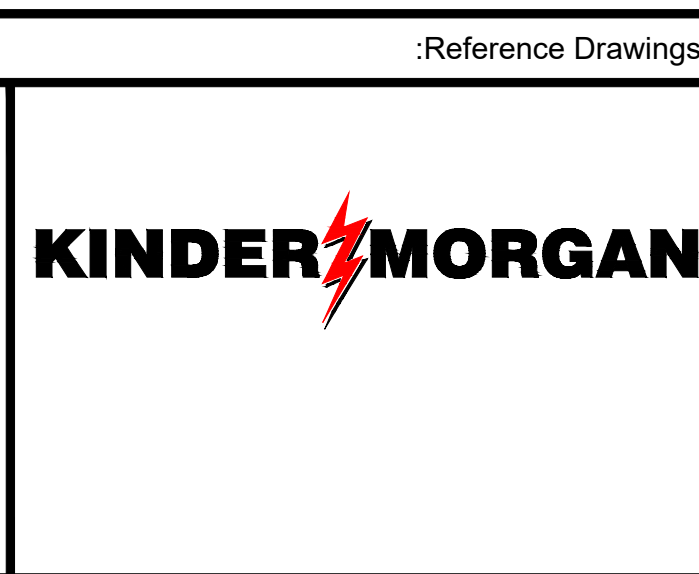
LEGEND:

- CUT
- FILL

NO.	Revision Description	Project ID	Date
C	ISSUE FOR BID	239998	07/07/2025
B	ISSUE FOR REVIEW	239998	07/02/2025
A	ISSUE FOR REVIEW	239998	06/26/2025

PROJECT
AFE# 239998

TGP CASING EXTENSIONS & RELOCATIONS
TGP LINE 100-3, 100-4, 100-5, & 100-7
AT KY SR 32




TENNESSEE GAS PIPELINE COMPANY
TGP CASING EXTENSIONS &
RELOCATIONS
TGP LINE 100-3 & 100-5
AT KY SR 32

PIPING PROFILE

Status: ISSUED FOR BID	
STATE:	PIN No:
CO./PAR.:	SCALE: AS SHOWN
Category:	
File Name:	
Drawing No:	TO-T6-100-3-227A1
Rev	C

BILL OF MATERIALS						
ITEM	QTY	UNITS	DESCRIPTION	PO#	HEAT #	SERIAL #
1	240	FT	PIPE - NPS 36, 0.500" WT, SAWL/SMLS, PEB, API 5L-PSL2, GR X-60, MATL SPEC: M8220 W/M8370 14-16 MILS FBE			
2	480	FT	PIPE - NPS 30, 0.500" WT, SAWL/SMLS, PEB, API 5L-PSL2, GR X-60, MATL SPEC: M8220 W/M8370 14-16 MILS FBE			
3	120	FT	PIPE - NPS 26, 0.375" WT, SAWL/SMLS, PEB, API 5L-PSL2, GR X-60, MATL SPEC: M8220 W/M8370 14-16 MILS FBE			
4	20	FT	PIPE - NPS 3, 0.216" WT, SMLS, PEB, API 5L-PSL1, GR B, BEVELED 30 DEG, SINGLE RANDOM LENGTH, MATL SPEC: M8220 / BARE			
5	4	EA	ELL, 45 DEG - 3R, NPS 36, 0.500 WT, WELD, CID 33.950", FIELD SEGMENTING 1% OVALITY, GR WPHY-X60, MSS SP-75, MATL SPEC:M8120			
6	8	EA	ELL, 45 DEG - 3R, NPS 30, 0.500 WT, WELD, CID 28.130", FIELD SEGMENTING 1% OVALITY, GR WPHY-X60, MSS SP-75, MATL SPEC:M8120			
7	2	EA	ELL, 45 DEG - 3R, NPS 26, 0.500 WT, WELD, CID 24.4930", FIELD SEGMENTING 1% OVALITY, GR WPHY-X60, MSS SP-75, MATL SPEC:M8120			
8	80	FT	SPLIT CASING, 30" X 0.312" WT, SPLIT BOTH SIDES W/COUPONS LEFT EVERY 2-3 FEET FOR TRANSPORT AND HANDLING			
9	1	EA	CASING END SEAL - 26" CARRIER PIPE O.D. W/ 3/32" OF ENAMEL X 30" CASING O.D., CONFORM TO ECCENTRIC CARRIER/CASING CONFIGURATION, SPLIT WRAP AROUND DESIGN, 1/8" MIN. THICKNESS NEOPRENE RUBBER, MIN 60 DUROMETER SYNTHETIC RUBBER, W/BUTYL MASTIC STRIPS TO SEAL EDGES OR EQUAL, C/W TWO STAINLESS STEEL BANDS, NOTE: ACCEPTABLE MANUFACTURERS: PIPELINE SEAL & INSULATOR, INC.: MALONEY & ADVANCE PRODUCTS & SYSTEMS, INC. & T.D. WILLIAMSON			
10	14	EA	CASING INSULATOR - 26" CARRIER PIPE O.D. X 30" CASING O.D., HIGH DENSITY POLYETHYLENE, INNER SURFACE SHALLOW MOLDED GROVES, 1"-1-1/2" RUNNER HEIGHT, 6" MIN WIDTH NOTE: 1) 26" PIPE, COATED 3/32 ENAMEL 2) ACCEPTABLE MANUFACTURERS: PIPELINE SEAL & INSULATOR, INC.; MALONEY & ADVANCE PRODUCTS & SYSTEMS, INC. & T.D. WILLIAMSON			

PROPORTIONAL SHARE						
KYTC ST. PROJECT #						
PIPELINE NAME	LENGTH WITHIN ROW (L.F.)	LENGTH OUTSIDE ROW (L.F.)	TOTAL LENGTH (L.F.)	KDOT PROPORTIONATE SHARE (%)	TGP PROPORTIONATE SHARE (%)	TOTAL (%)
TPG 100-3	51	38	89	57.3	42.7	100.0
TPG 100-4	143	61	204	70.1	29.9	100.0
TPG 100-5	141	64	205	68.8	31.2	100.0
TPG 100-7	133	63	196	67.9	32.1	100.0
TOTAL	468	226	694	67.4	32.6	100.0

			:Reference Drawings		:Facility Name	
			PROJECT AFE# 239998		 TENNESSEE GAS PIPELINE COMPANY TGP CASING EXTENSIONS & RELOCATIONS TGP LINE 100-3, 100-4, 100-5, & 100-7 AT KY SR 32 BILL OF MATERIALS	
			TGP CASING EXTENSIONS & RELOCATIONS TGP LINE 100-3, 100-4, 100-5, & 100-7 AT KY SR 32			
C	ISSUE FOR BID	239998	07/07/2025	Status: ISSUED FOR BID STATE: _____ PIN No: _____ CO./PAR.: _____ SCALE: NONE Category: _____ File Name: _____ Drawing No: TO-T6-100-3-227A3		
B	ISSUE FOR REVIEW	239998	07/02/2025			
A	ISSUE FOR REVIEW	239998	06/26/2025			
NO	Revision Description	Project ID	Date	Rev C		